



Summer is here and although we can expect the usual changeable weather, when the sun does decide to shine there is almost nowhere better to be than Surrey Heath. I'm sure that the last sentence may have raised eyebrows but I truly believe that little compares to the simple pleasure of an afternoon stroll along the Frimley Lodge towpath, or an early morning nature walk at Lightwater Country Park.

It's sometimes easy to forget what a very green and pleasant borough we live in – so why not make the most of it this summer?

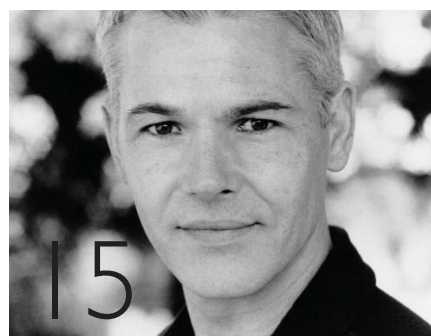
Summer is a fantastic time of year but keeping the school-aged members of the family occupied during the long school holidays can be quite a headache – as you will see from the front page, Surrey Heath Borough Council's Arts and Leisure service has the answer with the return of the new and improved Action Holiday. Featuring four weeks of safe, fun packed activities there should be no excuse for the usual cry of 'I'm bored'.

With the English summer often swinging from drought to flood and back again, this edition of Heathscene features articles on how to avoid the adverse affects of both very wet and very dry weather. Last year, 2,000 homes in the Thames Water area were flooded due to sewer blockages and 124 acres of heath and woodland were destroyed in the borough by large-scale fires. Find out how you can help reduce the risks of both problems on pages 12 and 13.

Have a great summer!

Daniel Harrison, Editor

Photo: The Heathscene editorial team - from left to right Daniel Harrison, Anne Compton and Simon Ashall



Action Holiday 2008	Cover
The Camberley Youth Café	3
Support The British Heart Foundation	4
Surrey Heath launches Young Musician competition	4
Topping out The Atrium	5
Your opportunity to have your say	6
Good news for Surrey Heath from the Audit Commission	6
First Responders save lives	7
Camberley Funday	7
Profile on: Jonny Rees-Davies	8
Testing our emergency planning	8
Surrey Heath Show voted big success	9
Age Concern opens Tea Room	10
Shaping your Borough	10
Helping to combat underage drinking	11
Why not join a community speedwatch scheme?	11
Reduce the risk of heath fires	12
Free Home Fire Risk Check	12
Fatty sewers lead to floods	13
Web Roadshow	13
Are you eligible for a Warm Front grant?	14
What's on at Camberley Museum	14
Camberley Theatre new Summer School	15
Christmas panto promises to be most successful yet	15
Combating benefit fraud	Back cover

Copywriting by Simon Ashall and Anne Compton, Surrey Heath Borough Council
 Designed by GSB Associates Ltd, 26-28 Gildredge Road, East Sussex BN21 4SA
 Printed by Headley Brothers, The Invicta Press, Queens Road, Kent TN24 8HH
 Published by Surrey Heath Borough Council. Email heathscene@surreyheath.gov.uk Tel: 01276 707100
 If you require this magazine in a different format, please call the communications team on 01276 707312.

Copyright © Surrey Heath Borough Council.